



Queen Elizabeth School

# QEII Newsletter

Issue 96  
02.02.18

## This Week

**INSET Day:** There is an INSET day on Friday 9th February. (The Friday before Half Term.)

**Oaks Reunion Prom:** The Oaks Prom this year has a "tropical" theme and will be on the evening of Friday 2nd March from 7pm-9pm. Invitations will be sent out soon.

**Sign2Sing Afternoon:** Our Primary classes will be joining with students from Jolesfield & Holbrook Schools to sing and sign "Friends Forever" as part of this year's Sign2Sing event on Monday 5th February. There is a link to the video on our Facebook page if you would like to practise at home. Students taking part are asked to please bring a £1 donation for the Signhealth Deaf Health Charity on the day.

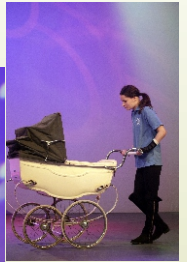
**Gala:** Our Gala performance at The Capitol is on Wednesday 13th & Thursday 14th June at 7pm. Tickets will be on sale soon, directly from the theatre's box office. The school will be closed for an INSET day on Friday 15th June.

**Running Rosie Returns:** Rosie, the teacher in Elms class, will be taking part in a sponsored 10k run again later this year. She would love to have extra people on her team, either staff, students or friends of the school. The race is also open to wheelchair users. If you are interested, please contact her via the Office.

**SALT Resources Makers Wanted:** The Speech and Language team are looking for volunteers to help make communication books on Tuesday 20th February any time between 9.15 and 12.00. They promise lots of therapeutic cutting and sticking - and also coffee/tea and cake! Contact Sarah directly on [sarah.taylor37@nhs.net](mailto:sarah.taylor37@nhs.net) if you would like to help.

## Rock Challenge!

Congratulations to all our Rock Challenge cast, crew and team. The performance at The Hawth on Tuesday evening was a big success and we won **EIGHT** Awards; Entertainment, Choreography, Lighting, Concept, Soundtrack, Spirit of Rock Challenge, Stage Use and Performance Skill.



## Class News from Beech Class

This week in Chestnut class we have continued learning about 'The Magic of Music', using rubber bands to make soundwave paintings. The children loved plucking and twanging the rubber bands just like the strings on a guitar and using the vibrations to make beautiful art.



## Coffee Mornings/Afternoons

Coffee mornings/afternoons replace Parents' Evenings and give you the opportunity to meet individually with your child's teacher. If you are unable to attend please contact your teacher directly to arrange a time to suit you.

Future Dates:

**Thursday 22nd March 10.30am** - Primary (Willows, Palms, Chestnut, Beech & Elms)

**Friday 25th May 10.00am** - Seniors (Pines, Cedar & Limes)

**Thursday 7th June 10.00am** - Sixth Form (Oaks and Firs)

**Thursday 21st June 10.30am** - Primary (Willows, Palms, Chestnut, Beech & Elms)

## Open Mornings/Afternoons

Our Open Mornings & Afternoons are a chance to come into school and join in with class activities alongside your child. Your class will let you know the details of the planned activity as each date approaches.

Future Dates:

**Tuesday 6th February 10.30am** - Primary (Willows, Palms, Chestnut, Beech & Elms)

**Tuesday 13th March 10.30am** - Firs

**Friday 23rd March 2.00pm** - Seniors (Pines, Cedar & Limes)

**Friday 6th July 2.00pm** - Seniors (Pines, Cedar & Limes)

**Monday 9th July 10.00am** - Firs

**Wednesday 25th April 2.00pm** - Primary (Willows, Palms, Chestnut, Beech & Elms)

## Support Groups

Behaviour Support Clinic: 15/03/18, 19/04/18, 17/05/18, 21/06/18 & 19/07/18. To book yourself a clinic slot to see Dr. Elizabeth Scott Gilba please contact Alison Mitchison in the Office.

Parent Support Group: These are on Thursdays. Dates for this year are 22/02/18, 29/03/18, 26/04/18, 24/05/18, 28/06/18, 19/07/18. The group meets for lunch at 12.30pm and the speaker usually starts at 1pm. If you are planning to attend please let us know in advance as we are unable to order lunches on the day.

If you have a topic you would like to be covered please let us know.