



# Samsung Kids parental controls

## Step-by-step guide

Samsung Kids is a smart device interface designed for children. You can set it up on your or your child's device.

Set up Samsung Kids to shape a safe environment for your child to explore and connect with the world.

See how to set a PIN lock, create a child profile, set daily time limits and other available online safety features.



**SAMSUNG**

## What do I need?

A Samsung tablet or smartphone and Samsung Kids

### Restrictions you can apply



Apps Access



Calls & Texts



Downloading file sharing



Media streaming



Privacy



Screen time



Timer

# What is Samsung Kids?

Samsung Kids provides a fun and secure digital place for your children to play in.

Launch Samsung Kids whenever your children want to play! A single touch of the Quick Panel of your device is all it takes to get started – with no need to download a thing. Parents can protect their children from potentially unsuitable apps and websites, control their playtime and limit their accessibility via the Parental Control mode. Let your children have fun with the cute Samsung Kids friends and exciting child-friendly features that help develop creativity.

## Overview

1. [How can I access Samsung Kids with Quick Panel?](#)
2. [How do I set up Samsung Kids?](#)
3. [Where do I find parental controls?](#)
4. [How do I create my child's profile?](#)
5. [Where do I manage screen time?](#)
6. [Setting bedtime limits](#)
7. [How do I add a contact?](#)
8. [How do I manage access to apps?](#)
9. [Manage access to photos and music](#)
10. [How do I close Samsung Kids?](#)

# 1. How can I access Samsung Kids with Quick Panel?

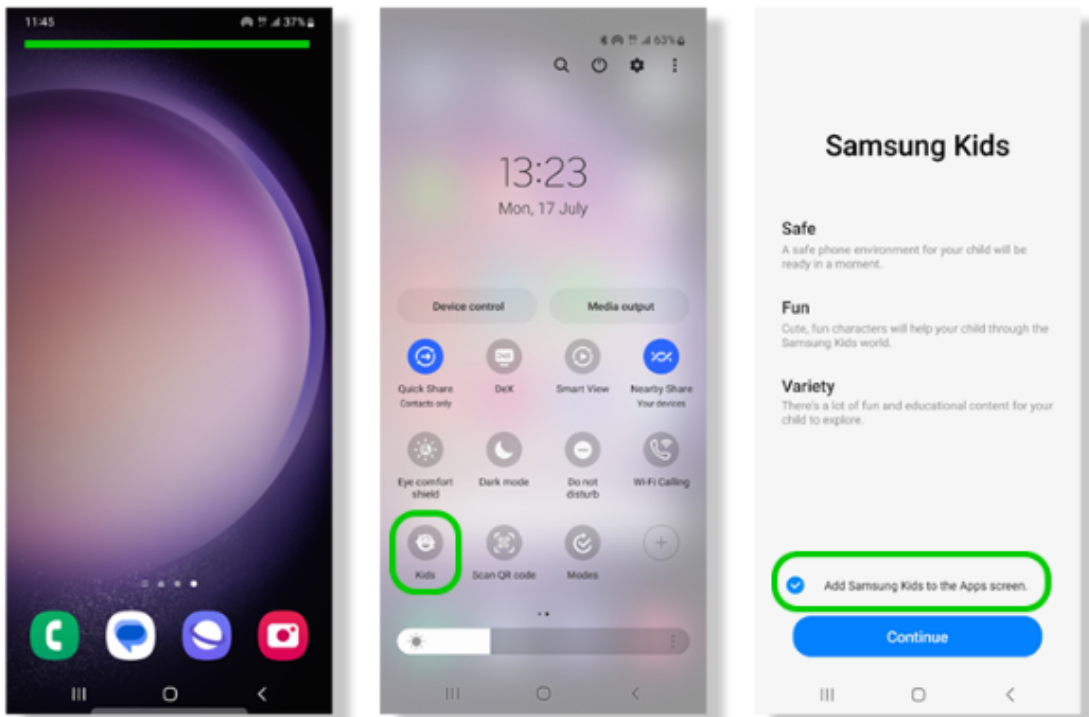
With Samsung Kids, your child can use your or their device safely.

To access Samsung Kids:

**Step 1** – Select the bar at the top of your device and drag it down to open the **Quick Panel**. Find and tap the **Samsung Kids logo**.

**Step 2** – If you cannot find Kids, swipe your finger left across the screen to navigate to the next page until you do. Otherwise, see the next step to **install and set up Samsung Kids**.

**Step 3** – For easier access, you can open **Samsung Kids** and tick **Add Samsung Kids to the Apps screen**.



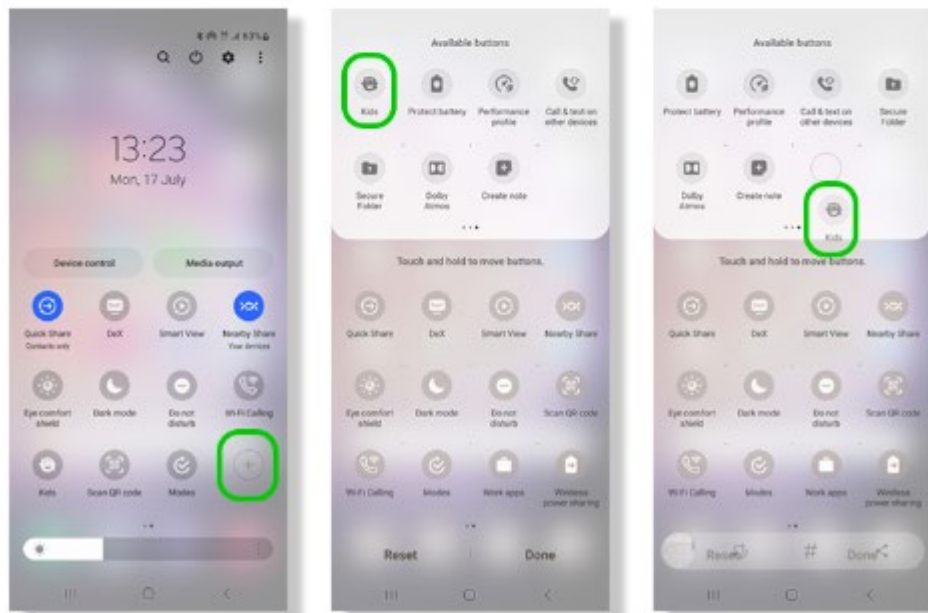
## 2. How do I set up Samsung Kids?

For some devices, Samsung Kids is automatically visible. However, this isn't the case for every Samsung device.

To get Samsung Kids:

**Step 1** – Navigate to the **Quick Panel** by dragging your finger from the top of your screen down until you see all your available buttons. Swipe your finger left until you see the **plus icon**. Tap it.

Under **Available buttons**, find **Kids**. Drag it down to join your active buttons.



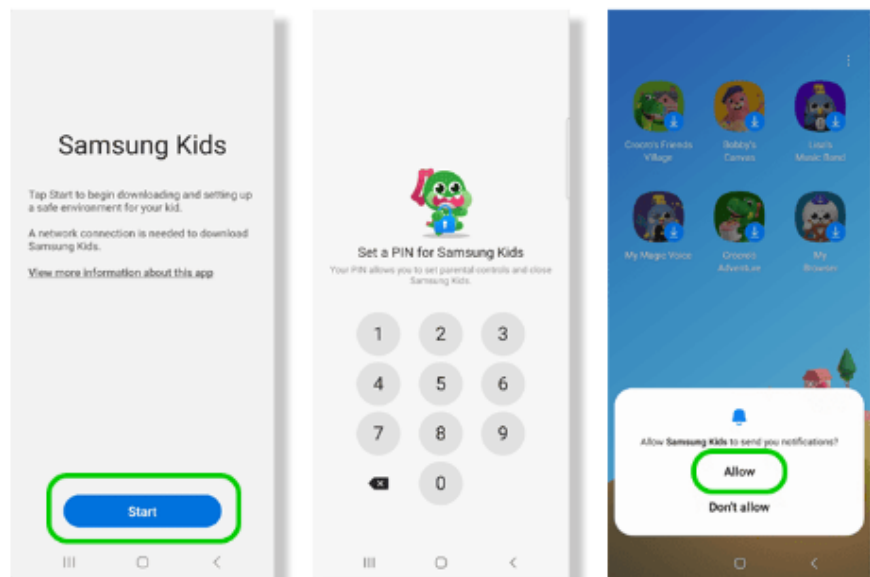
## To set up Samsung Kids:

**Step 2** – Open the **Kids** button and tap **Start**. Create and confirm a **4-digit PIN**.

This allows you to toggle **parental control mode** or **exit the app**. Do not share this PIN with your child.

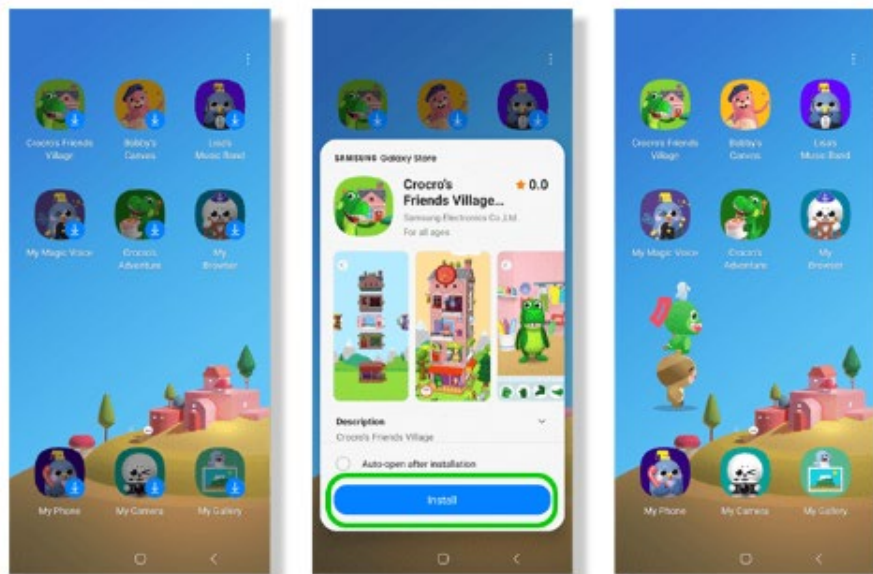
Alternatively, you can use the PIN you already use or the pattern that unlocks your device.

When prompted, **allow notifications**.



**Step 3** – Samsung Kids comes with preset app options. However, you must download them to use them. Tap an **app icon** to learn more and then **Install** to start the download.

Samsung Kids is now ready for your child to use.

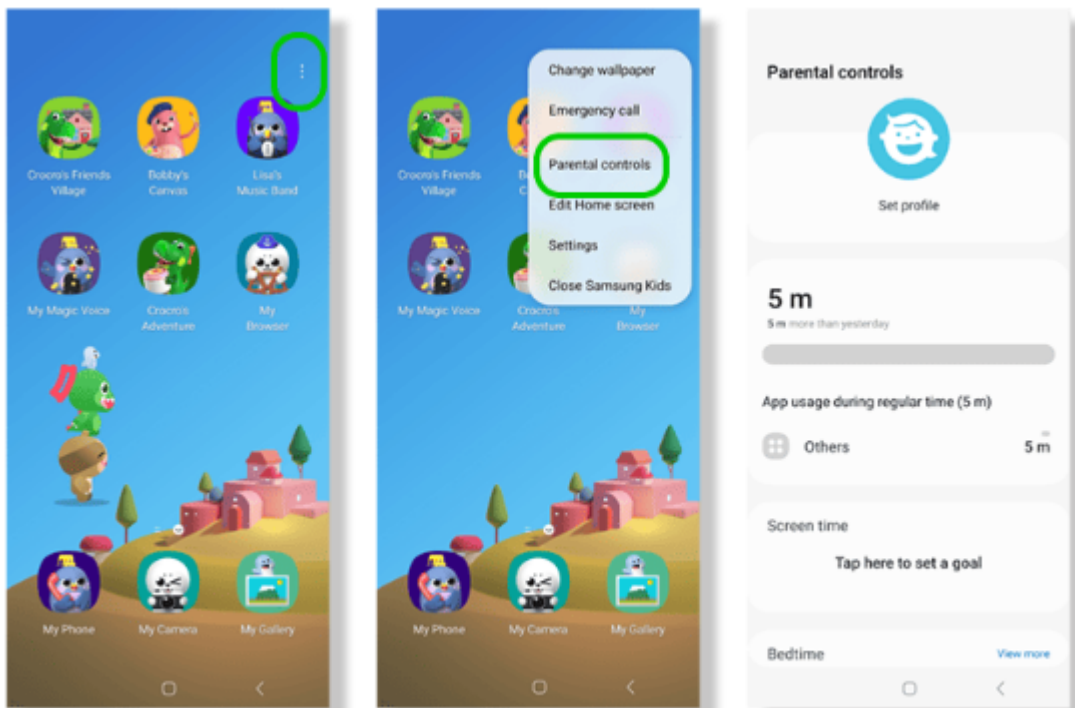


### 3. Where do I find parental controls?

Samsung Kids parental controls allow you to manage screen time, set bedtime, customise allowed content and more.

To review parental controls:

From the Samsung Kids **home screen**, tap the **three dots** in the top right corner. Select **Parental controls**, enter your **PIN** and choose which controls to customise.





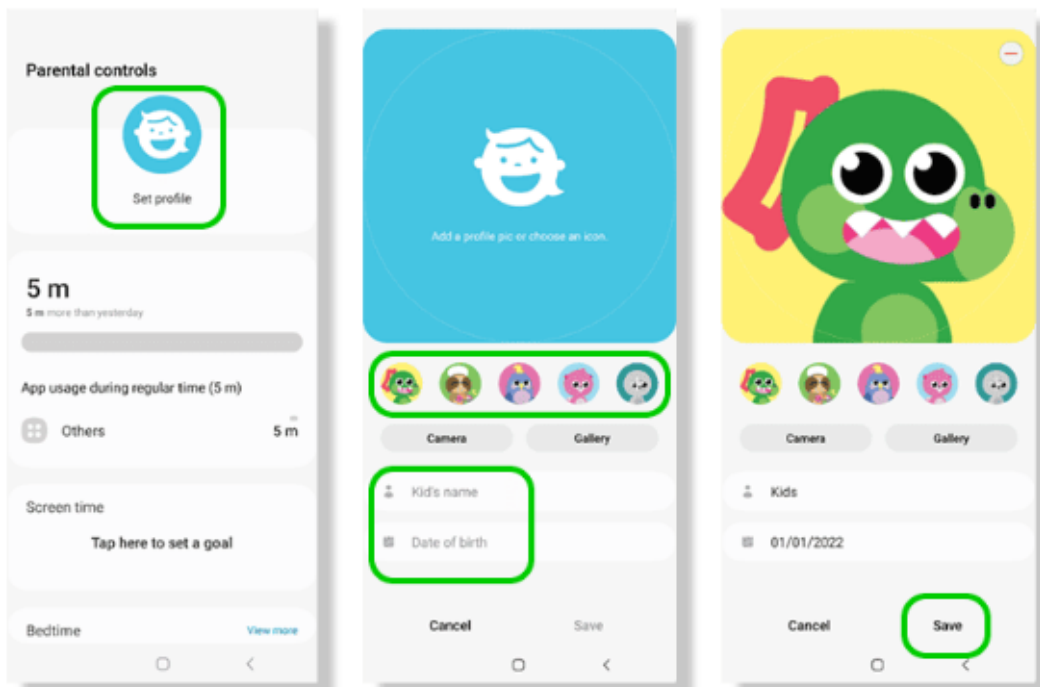
## 4. How do I create my child's profile?

If you have more than one child using Samsung Kids, creating profiles can help personalise the app to their interests and age. You can add up to 6 separate profiles.

To create a profile:

From the **Parental controls** screen, tap the **Samsung Kids icon**.

Enter their **information** and tap **Save**.



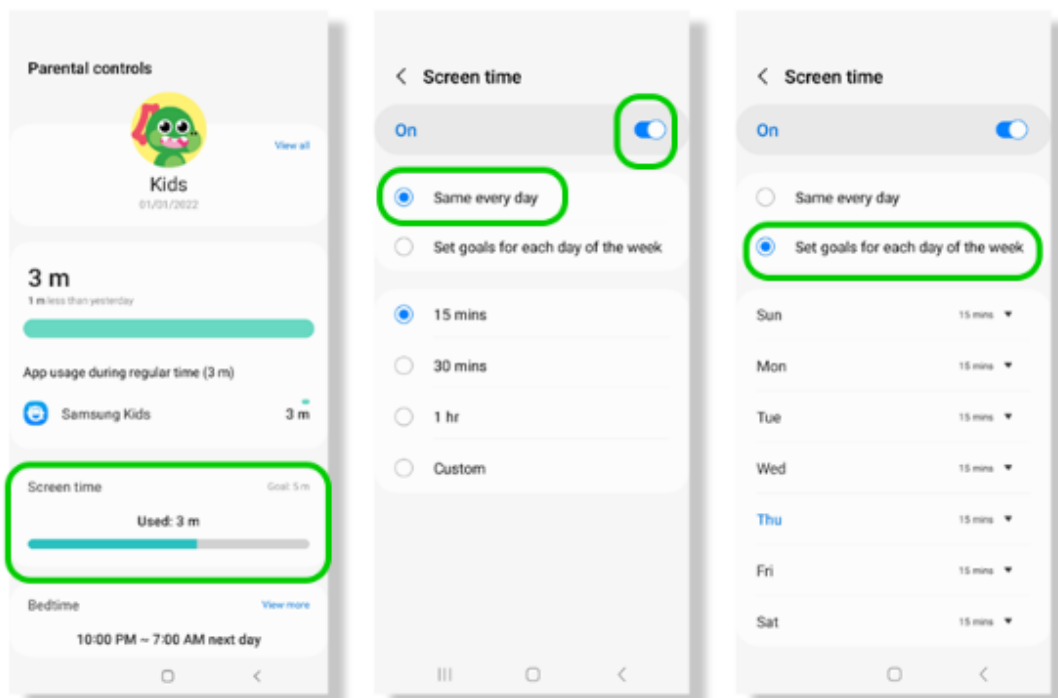
## 5. Where do I manage screen time?

Review how much time your child spends on their device and set daily playtime limits.

To manage screen time:

From the **Parental controls** screen, tap **Screen time** and tap the **toggle** so it's blue to turn it on.

Keep the **same goals every day** or set **custom goals for every day of the week**.



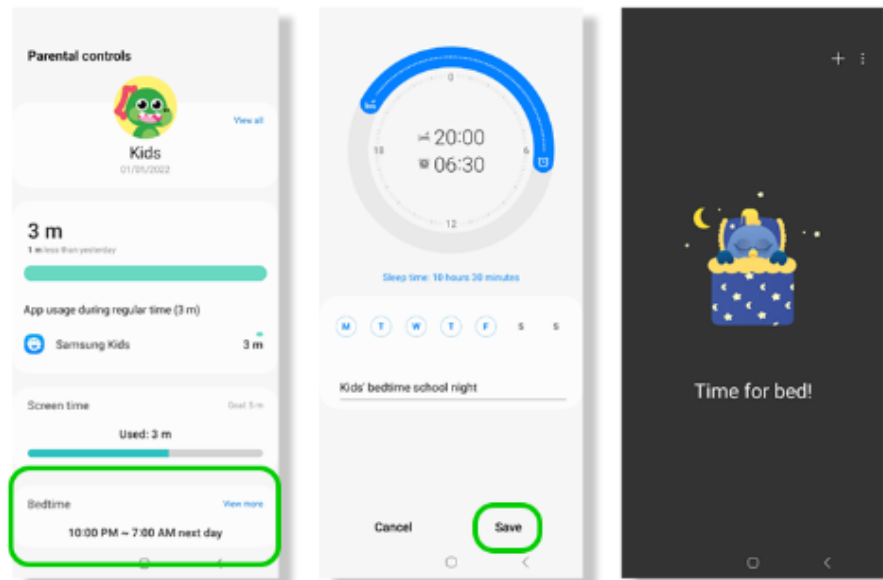
## 6. Setting bedtime limits

As a part of daily playtime limits, Samsung Kids has a separate setting for bedtime. This can help establish important routines around sleep and device downtime.

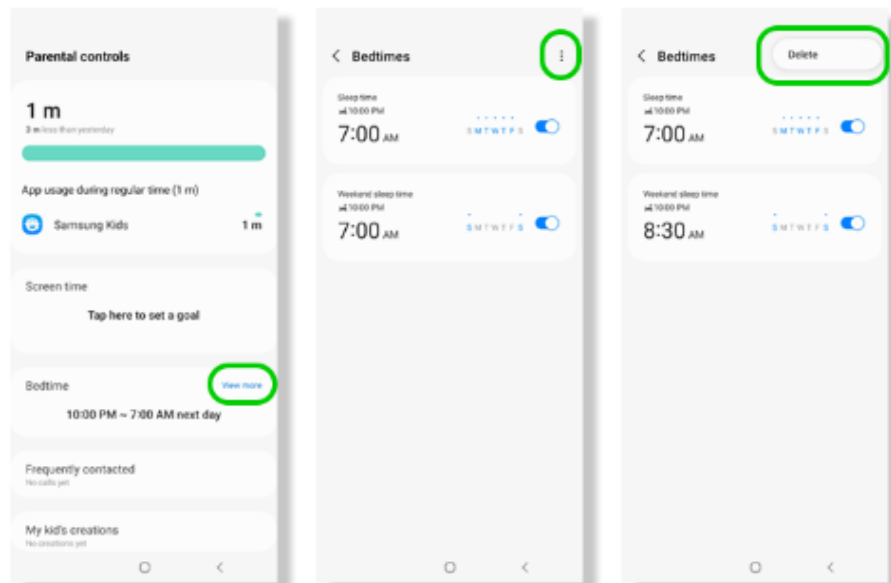
To set a bedtime:

**Step 1** – From the **Parental controls** screen, tap **Bedtime**. Set a **name** along with the **hours and days** Bedtime should turn on.

When Bedtime arrives, the screen will let your child know. [See how to enable certain apps for Bedtime.](#)



**Step 2** – You can add multiple schedules. When you tap Bedtime, you will see all schedules. To delete one, select the **three dots** in the top right corner and tap **Delete**.

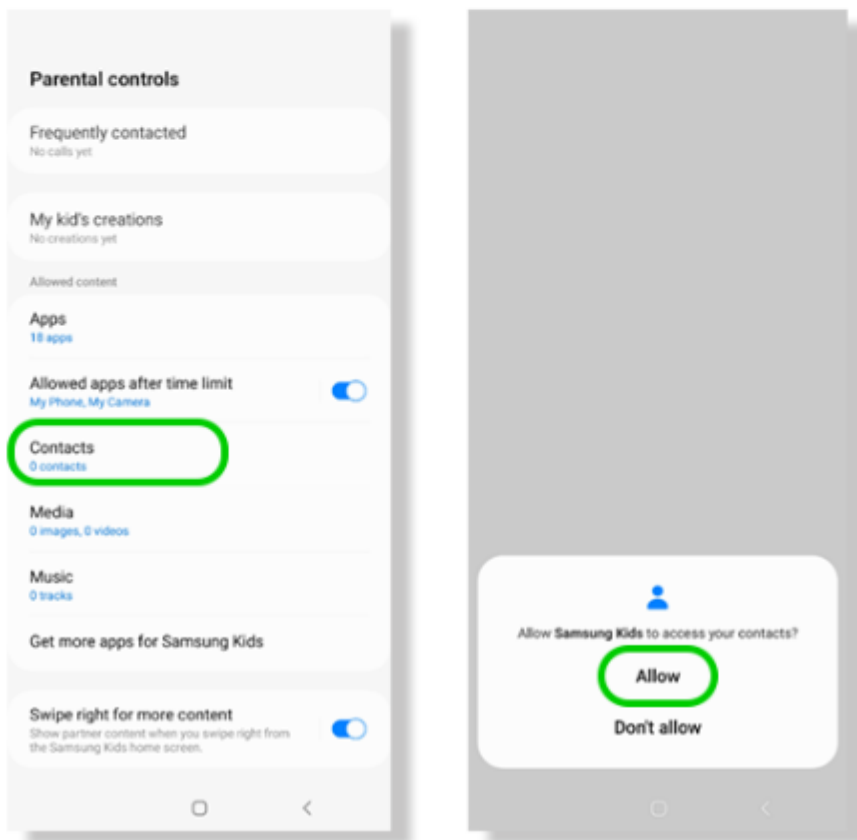


## 7. How do I add a contact?

You can add contacts your child's Samsung Kids profile. This means they can communicate with friends and family safely.

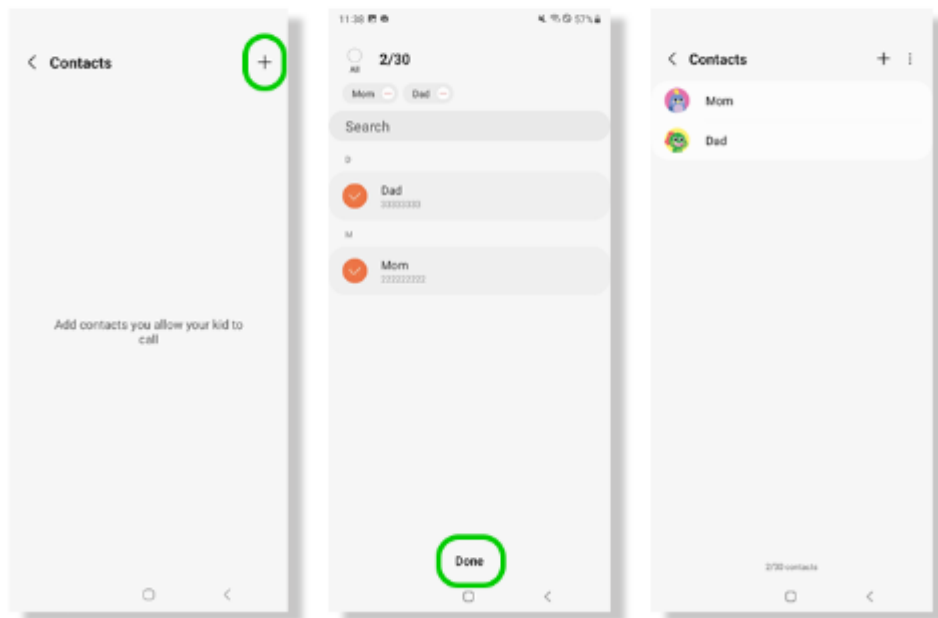
To add a contact:

**Step 1** – From the **Parental controls** screen, scroll to the bottom under **Allowed content** and select **Contacts**. Select **Allow** when prompted.



**Step 2** – Tap the + and search for a contact to add from your device’s list. Tap **Done** when you finish adding contacts.

Your child can place voice calls to anyone you add.



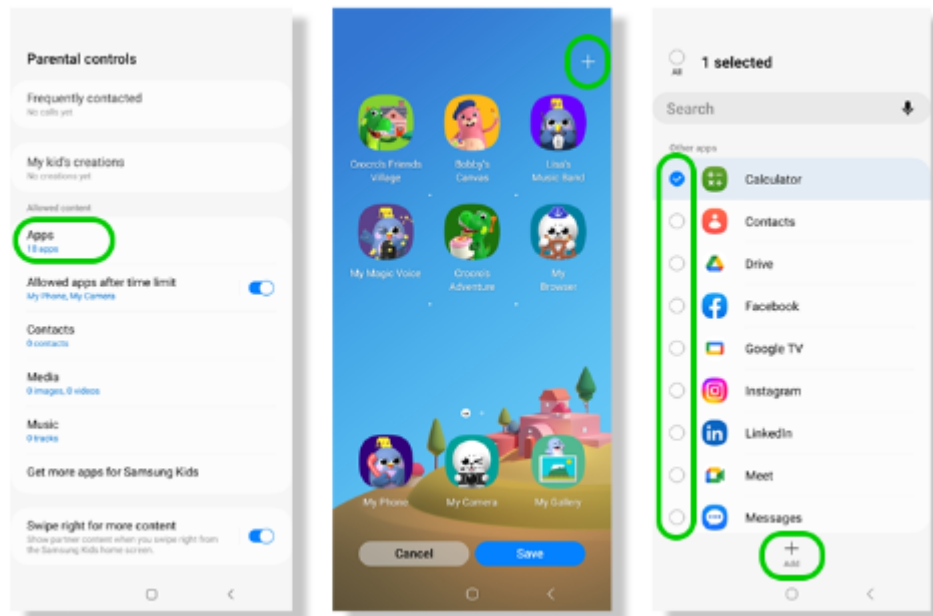
## 8. How do I manage access to apps?

You can choose to limit the apps your child uses to the ones offered within Samsung Kids. Or, you can add different ones.

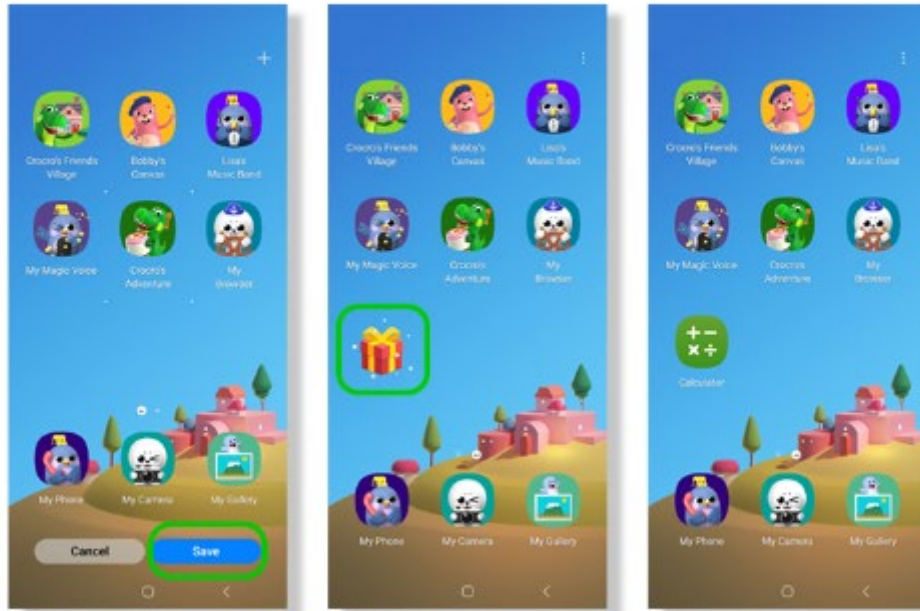
To add additional apps:

**Step 1** – From the Samsung Kids **Parental controls** screen, scroll to the bottom under **Allowed content** and tap **Apps** then the **+** button at the top right.

Select **which apps** to add and tap **+ Add**.

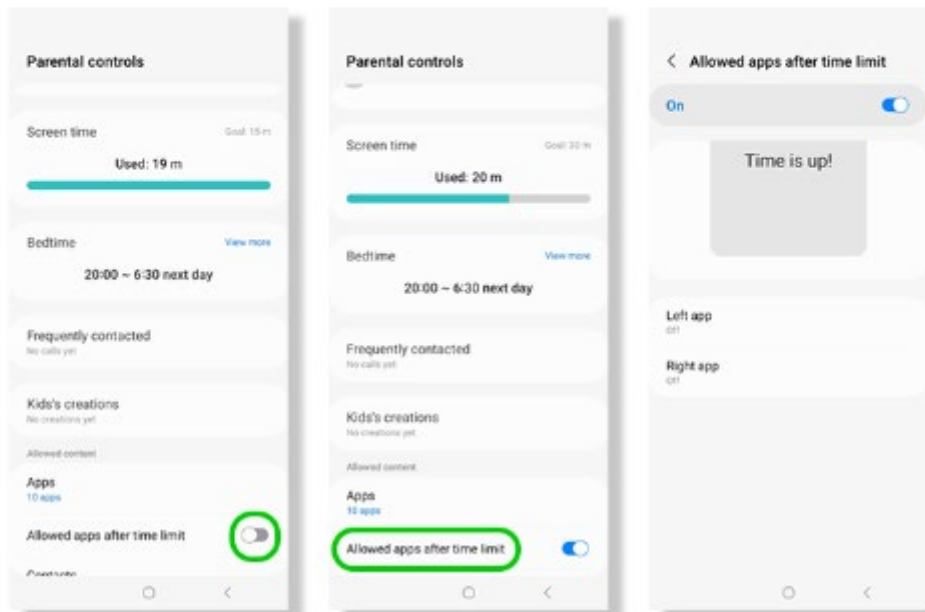


**Step 2** – Tap **Save** to enable access within Samsung Kids. The app will then show as a gift. Tap it to open the gift and use the newly added app.



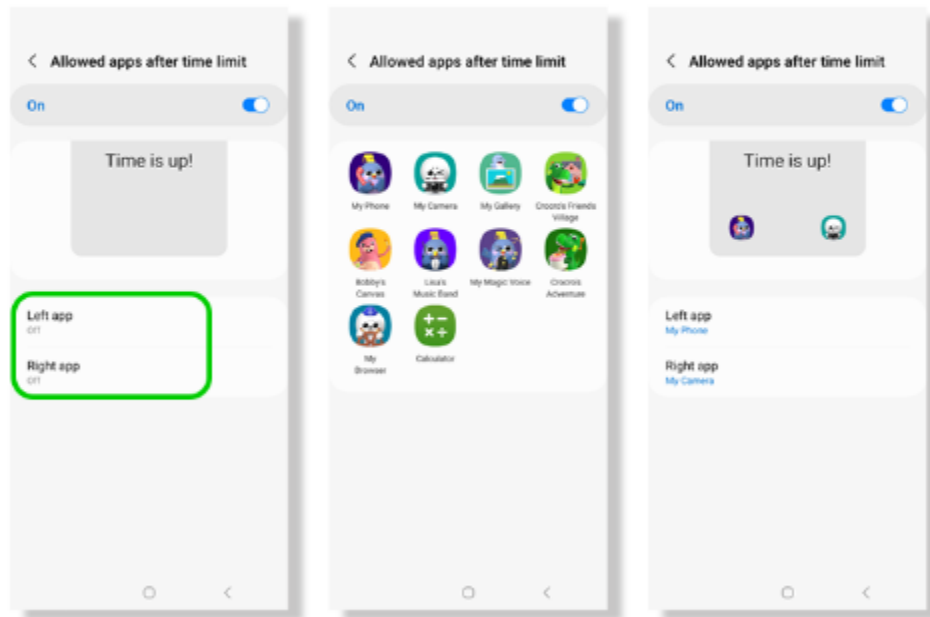
To allow apps after time limits:

**Step 3** – Under **Allowed content** on the **Parental controls** screen, tap the toggle next to **Allowed apps after time limit**. Then, tap the option to open it up.





**Step 4** – You can choose two apps, which will appear on the right or left of the screen. Tap **Left app** or **Right app** to set it up. Then, **choose** the app to add it.

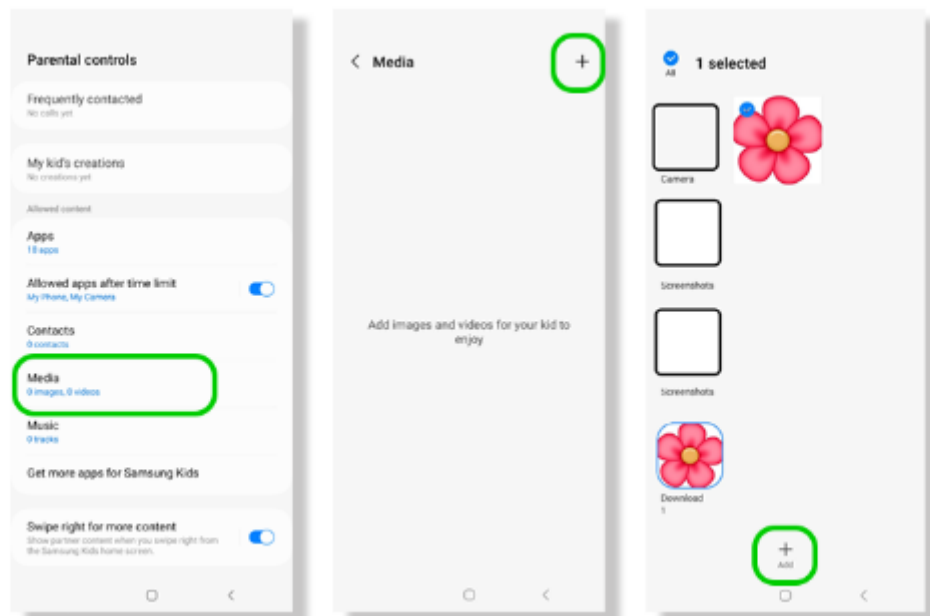


## 9. Manage access to photos and music

You can add photos and videos to Samsung Kids with parental controls. This lets your child view or listen to approved media content while using their device.

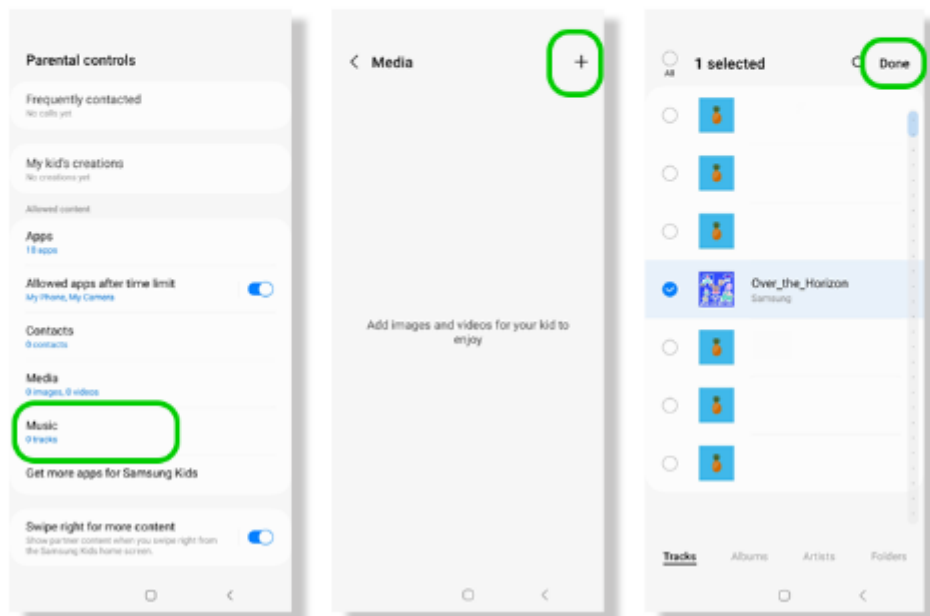
To add photos and videos:

**Step 1** – Under **Allowed content** on the **Parental controls** page, tap **Media**. In the top right corner, tap the **+** icon and select the **album or file** you want to add. Press **+ Add** to confirm your choice.



To add music:

**Step 2** – Under **Allowed content** on the **Parental controls** page, tap **Music**. In the top right corner, tap the **+** icon. Select the **audio files** you want to add, then press **Done**.



## 10. How do I close Samsung Kids?

When your child finishes using your or their device, you can close Samsung Kids to use the device as normal. Children cannot close it on their own and will need you to input your PIN.

To close Samsung Kids:

From the Samsung Kids **home screen**, tap the **3 dots** in the top right corner and choose **Close Samsung Kids**. Enter your **PIN** to confirm.

